

## Linking lineage and population observables in biological branching processes

Reinaldo García-García,<sup>\*</sup> Arthur Genthon, and David Lacoste

*Gulliver Laboratory, CNRS, ESPCI Paris, PSL Research University, 10 rue Vauquelin, 75005 Paris, France*



(Received 20 July 2018; revised manuscript received 24 October 2018; published 22 April 2019)

Using a population dynamics inspired by an ensemble of growing cells, a set of fluctuation theorems linking observables measured at the lineage and population levels is derived. One of these relations implies specific inequalities comparing the population doubling time with the mean generation time at the lineage or population levels. While these inequalities have been derived before for age-controlled models with negligible mother-daughter correlations, we show that they also hold for a broad class of size-controlled models. We discuss the implications of this result for the interpretation of a recent experiment in which the growth of bacteria strains has been probed at the single-cell level.

DOI: [10.1103/PhysRevE.99.042413](https://doi.org/10.1103/PhysRevE.99.042413)

### I. INTRODUCTION

The question of how a cell controls its size is a very old one [1], which despite decades of research is still under intense focus because the old experiments have only provided incomplete answers while a new generation of experiments based on the observation and manipulation of single cells in microfluidic devices is becoming more and more mature [2]. For instance, with time-lapse single-cell video microscopy, entire lineages of single cells such as *E. coli* can be traced over many generations. These experiments allow one to investigate mechanisms of cell size control (cell size homeostasis) with unprecedented statistics both at the single-cell level and at the level of a population.

Many policies of cell size control have been introduced: the “sizer” in which the cell divides when it reaches a certain size, the “timer” in which the cells grows for a specific amount of time before division, and the “adder” in which cells add a constant volume each generation [3]. The adder principle is now favored by many experiments [4–7], yet there is no consensus on why a specific regulation emerges under certain conditions and how it is implemented at the molecular level.

Another important question is how to relate measurements made at the lineage and at the population levels. A classical study revealed the discrepancy between the mean generation time and the population doubling time [8] in an age-dependent branching process with no mother-daughter correlations, called the Bellmann-Harris process in the literature on branching processes [9]. Importantly, it is still not known at present how to relate the mean generation time and the population doubling time in general models of cell size control.

Inspired by single-cell experiments with colonies of prokaryotic cells in microfluidic devices [5,10], we consider continuous rate models (CRMs), based on stochastic differential equations [4,11]. The population dynamics generated by

CRMs has an interesting thermodynamic structure, uncovered in Refs. [12,13], which we also exploit to derive fluctuation relations. As usual with fluctuation theorems [14], our results map typical behaviors in one ensemble (here the population level) to atypical behaviors in another one (here the single lineage level). A similar connection lies at the basis of an algorithm to measure large deviation functions using a population dynamics [15,16]. In the mathematical literature on branching processes, relations of this kind are known as many-to-one formulas [17]; they explain the existence of a statistical bias when uniformly choosing one individual in a population as opposed to following a lineage.

This paper is organized as follows: In Sec. II, we introduce two different averaging procedures for CRM dynamics, which we call the tree and the lineage averages. In Sec. III, we define and study size-controlled models. This includes a derivation of a fluctuation relation in terms of a quantity which we call dynamical activity. Such a fluctuation relation maps the single lineage level and the population level. We test it numerically and we show that it can be used to determine the population growth rate from lineage statistics. In Sec. IV, we derive a second, more general fluctuation relation. We explain why this result is related to the notion of “fitness landscape” introduced in Ref. [18], and we derive from it important inequalities comparing the mean generation times at the lineage and tree levels with the population doubling time. We then discuss the implications of our results for the experiment carried out by Hashimoto *et al.* [10], in which these inequalities have been tested. Then, we analyze age models with and without correlations between mother and daughter cells in Sec. V. Finally, we conclude in Sec. VI, while some important technical details are given in the Appendices.

### II. TREE AND LINEAGE AVERAGES IN A POPULATION

Let us consider a population of cells as shown in Fig. 1, which grow by division into only two offsprings at the end of each cell cycle. This population dynamics can be studied at three distinct levels: the lineage level (red), the population

<sup>\*</sup>reinaldomeister@gmail.com

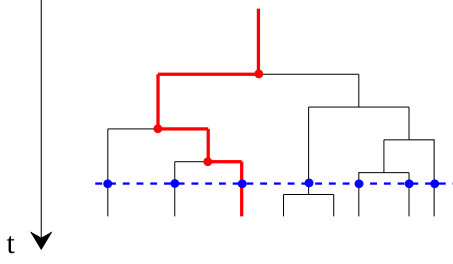


FIG. 1. Representation of the three main levels of description of the ensemble of cells: the lineage level (bold, red line), the population snapshot (horizontal, dashed, blue line), and the entire tree (thin, black line). A lineage average is an average over a single lineage going forward in time from the ancestor of the colony to its final state at time  $t$ . A tree average is equivalent to the average over *all* lineages starting at time  $t$  from those cells currently alive and going backwards in time up to the ancestor of the colony.

snapshot (blue), and the tree level which includes the complete phylogeny [19].

In the following, we shall introduce two different averages corresponding to the tree and lineage levels, which are defined for a fixed initial time  $t = 0$  and final time  $t$  of the dynamics of the population. For a tree average, we consider all the branches of the tree including all the cells still present at time  $t$  and which will divide only after the time  $t$ . This tree distribution puts an equal weight on the lineages which end at time  $t$  and, from that point, it goes backward in time towards the original ancestor from which the population originated. For this reason, this distribution is known in the literature under the name of retrospective distribution [13] and is equivalently an average over histories, i.e., backward lineages [20]. In contrast to this, what we call in this paper a lineage average corresponds to an average done over forward lineages, which go forward in time from the original ancestor of the colony towards its final state at time  $t$ .

For bacteria such as *E. coli* growing in a rich medium, each cell cycle is well described by an exponential growth phase [21], which for the cell cycle  $i$  can be parametrized by only three random variables shown in Fig. 2: the size at birth  $x_0^i$ , the growth rate  $v^i$ , and the generation time  $\tau_i$ .

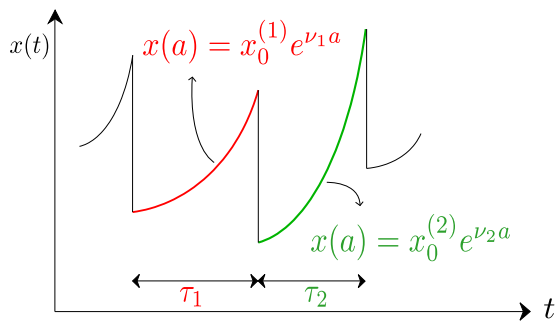


FIG. 2. Evolution of the cell size  $x(t)$  along a lineage. The cell cycle  $i$  is parametrized by three random variables: the generation time  $\tau_i$ , the growth rate  $v_i$ , and the size at birth  $x_0^i$ .

### III. RESULTS FOR SIZE-CONTROLLED MODELS

#### A. Definition of size-controlled models

Let us first consider a model with size-dependent division rate. The evolution of the number of cells of size  $x$  and single-cell growth rate  $v$  at time  $t$ ,  $n(\mathbf{y}, t)$  with  $\mathbf{y} = (x, v)$ , obeys the equation [4,11]

$$\begin{aligned} \partial_t n(\mathbf{y}, t) = & -v \partial_x [x n(\mathbf{y}, t)] - B(\mathbf{y}) n(\mathbf{y}, t) \\ & + 2 \int d\mathbf{y}' \Sigma(\mathbf{y}|\mathbf{y}') B(\mathbf{y}') n(\mathbf{y}', t), \end{aligned} \quad (1)$$

where  $B(\mathbf{y})$  is the division rate and  $\Sigma(\mathbf{y}|\mathbf{y}')$  is the probability for a newborn cell to have parameters  $\mathbf{y}$  given that the mother cell has parameters  $\mathbf{y}'$ . By integrating Eq. (1) over  $\mathbf{y}$  using the condition  $\int d\mathbf{y} \Sigma(\mathbf{y}|\mathbf{y}') = 1$ , a deterministic equation of evolution of the total population  $N(t) = \int d\mathbf{y} n(\mathbf{y}, t)$  is obtained.

The instantaneous growth rate of the population is defined as  $\Lambda_p(t) = \dot{N}/N$ , while the growth rate of the total volume of the cells is  $\Lambda_V(t) = \dot{V}/V$  with  $V(t) = \int d\mathbf{y} x n(\mathbf{y}, t)$ . When a steady state for the variable  $\mathbf{y}$  is reached, both  $\Lambda_p$  and  $\Lambda_V$  become independent of time and equal to each other [19].

If instead of the full population, we consider the dynamics at the lineage level, the natural quantity to study is the *probability density* of the cell to have size  $x$  and growth rate  $v$  at time  $t$ ,  $p(x, v, t)$ , which satisfies the evolution equation

$$\begin{aligned} \partial_t p(\mathbf{y}, t) = & -v \partial_x [x p(\mathbf{y}, t)] - B(\mathbf{y}) p(\mathbf{y}, t) \\ & + \int d\mathbf{y}' \Sigma(\mathbf{y}|\mathbf{y}') B(\mathbf{y}') p(\mathbf{y}', t). \end{aligned} \quad (2)$$

Note the difference with Eq. (1) due to the absence of the factor 2 in front of the integral, rendering  $p(\mathbf{y}, t)$  normalizable at any time,  $\int p(\mathbf{y}, t) d\mathbf{y} = 1$ .

#### B. Fluctuation theorem for dynamical activity

We now address the problem of connecting lineage to tree or population snapshot statistics in models with size control. The evolution of a given cell from time 0 to the time  $t$  is encoded in the trajectory  $\{\mathbf{y}\}_0^t = \{\mathbf{y}\}$ .

For the case of a size-controlled model, we derive, in Appendix A, path probability representations at the population and lineage levels, which are given by (A10) and (A9), respectively. Comparing these two expressions, we see that a possible way to bring both distributions “closer” together is to multiply the division rate at the lineage level by the factor  $m$ , and to consider a lineage starting from the same initial condition as that of the population.

Then, we introduce the dynamical activity  $W_t(\{\mathbf{y}\}) = \int_0^t dt' B(\mathbf{y}(t'))$ , which quantifies the activity of cell divisions, and the time averaged population growth rate,

$$\Lambda_t = \frac{1}{t} \int_0^t dt' \Lambda_p(t') = \frac{1}{t} \ln \frac{N(t)}{N(0)}. \quad (3)$$

After multiplying the relation mentioned above between path probabilities by an arbitrary trajectory-dependent observable  $A(\{x, v\})$ , and after taking the average, for the special case where  $m = 2$ , one obtains the following fluctuation relation:

$$\langle A(\{\mathbf{y}\}) \rangle_{\text{tree}, B} = \langle A(\{\mathbf{y}\}) e^{W_t(\{\mathbf{y}\}) - t \Lambda_t} \rangle_{\text{lin}, 2B}, \quad (4)$$

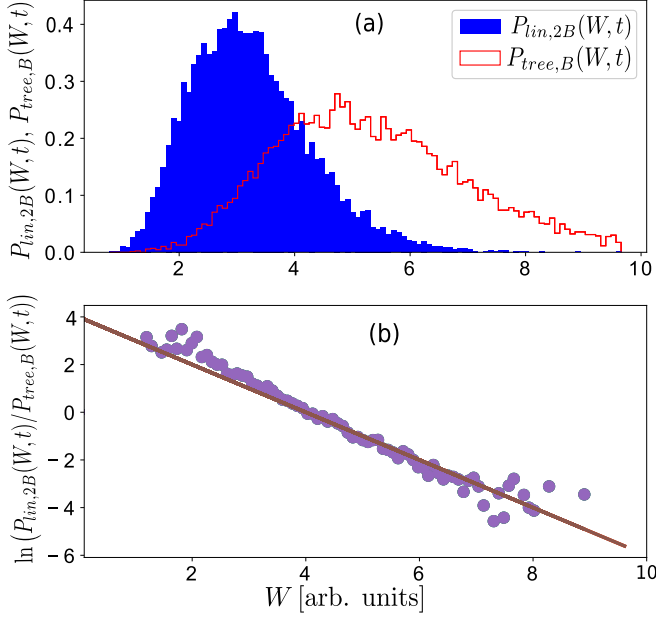


FIG. 3. Illustration of the fluctuation relation in the case of growth with a constant growth rate  $\nu = 2$ . (a) Distributions of dynamical activity at the time  $t = 2$  in a lineage with division rate  $2B$  (blue, filled) and in a tree with division rate  $B$  (red, unfilled). (b) Logarithmic ratio of these probability distributions.

where  $\langle \cdot \rangle_{\text{tree},B}$  denotes a tree average generated by the original dynamics with a division rate  $B$ , while  $\langle \cdot \rangle_{\text{lin},2B}$  denotes a lineage average with a modified dynamics that has a division rate  $2B$ . The reason for this modified division rate is that each cell divides into  $m = 2$  cells, and as a result a factor two appears at the population level in Eq. (1), which is absent for the corresponding equation at the lineage level. In the particular case where the observable  $A$  only depends on  $\mathbf{y}(t)$  instead of the full trajectory  $\{\mathbf{y}\}$ , Eq. (4) relates the lineage level to the population snapshot level instead of the tree level. The mapping also requires that the original and the modified dynamics start with the same initial condition  $\mathbf{y}(0)$ , defined here in terms of cell size and growth rate.

For the specific choice  $A(\{\mathbf{y}\}) = \delta(W - W_t(\{\mathbf{y}\}))$ , Eq. (4) leads to a Crooks-like relation [14],

$$P_{\text{tree},B}(W, t) = P_{\text{lin},2B}(W, t)e^{W-t\Lambda_t}, \quad (5)$$

which relates the distribution of dynamical activity at time  $t$  in a tree [lineage]:  $P_{\text{tree},B}(W, t)$  [ $P_{\text{lin},2B}(W, t)$ ]. This relation is illustrated in Fig. 3 for a population of cells growing with a constant single-cell growth rate  $\nu$ . Numerically, instead of working directly with Eq. (1), we simulate an equivalent Langevin equation, which accounts for deterministic growth with the rate  $\nu$  and stochastic cell divisions with a rate  $B(x, \nu)$ . In the simulation, the division has been assumed to be symmetric and the single-cell growth  $\nu$  constant, which corresponds to the particular choice of  $\Sigma(\mathbf{y}|\mathbf{y}') = \delta(\nu - \nu')\delta(x - x'/2)$ . Note that this dynamics bears some similarity to that of stochastic resetting introduced in Ref. [22], with the difference that in our case the resetting of the size is relative to the current size before division, while in this reference the resetting was to a

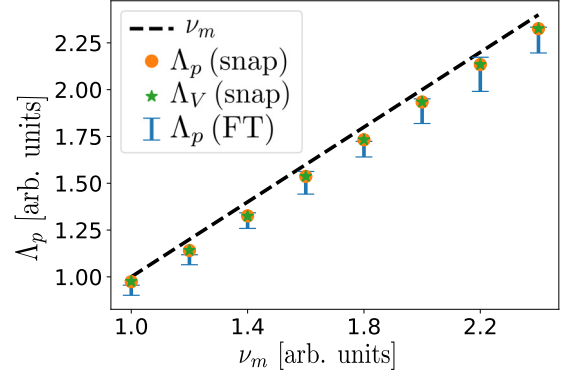


FIG. 4. Population growth rate  $\Lambda_p$  vs the mean single-cell growth rate  $\nu_m$ : from a population snapshot (orange circles), from the growth rate of the total volume (green stars), and from Eq. (6). Here the cell growth rate is taken from the normal distribution  $\mathcal{N}(\nu_m, \sigma_\nu)$  and  $B(x, \nu) = \nu x$ . Error bars have been obtained by using the fluctuation relation on 1000 trajectories and then repeating the estimation another 50 times.

constant position. Another important difference is the absence of diffusion in our model.

We have used normalized units of time and size, so that  $\nu = 2$  and  $B(x, \nu) = \nu x$  in these units. Since  $\Lambda_p = \Lambda_V = \nu$ ,  $\Lambda_t = 2$ , the two distributions measured at the time  $t = 2$  cross as expected at  $W = 4$  [Fig. 3(a)]. Figure 3(b) confirms that the slope of the logarithmic ratio of the two probability distributions is indeed  $-1$  as expected from Eq. (5).

Let us emphasize the following points concerning our first main result: This fluctuation relation is very general; it holds whether or not the single-cell growth-rate fluctuates, i.e., for arbitrary forms of the kernel  $\Sigma$  and arbitrary division rate  $B(x, \nu)$ . There is no requirement that the population should be stationary either at time 0 or at time  $t$ . Further, it generalizes to the case that each cell has  $m$  offsprings instead of two, provided that this number  $m$  is independent of the state of the system  $\mathbf{y}$  and that the modified lineage dynamics has a division rate  $mB(x, \nu)$ , as shown in Appendix A 3.

The normalization of  $P_{\text{tree},B}(W, t)$  in (5) leads to the relation

$$\Lambda_t = \frac{1}{t} \ln \int dW e^W P_{\text{lin},2B}(W, t), \quad (6)$$

which could be used either to infer the population growth rate from lineage trajectories or to infer the form of the division rate  $B$  using lineage and population trajectories [23]. In the next section below, we provide such a numerical illustration.

### C. Application to the determination of a population growth rate

Since the variability of single-cell growth rate is known to be important experimentally [21], we now discuss its role on the population growth rate in light of our results. A simple way to study this question in a simulation is to assume that the single-cell growth rate  $\nu$  is distributed according to a normal distribution of mean  $\nu_m$  and variance  $\sigma_\nu$ . This is what we have done in Fig. 4, where a division rate of the form  $B(x, \nu) = \nu x$  has been used. Although the values taken by  $\nu$  are then uncorrelated from one division to the next, correlations between the

mother and daughter generation times are still present due to the size dependence of the division rate. This figure compares several determinations of the population growth rate  $\Lambda_p$  as function of  $\nu_m$ . In the absence of variability where  $\sigma_v = 0$ , we have  $\Lambda_p = \nu_m$ , which is shown as a black dashed line in the figure. In the presence of variability, this figure confirms that the growth rate of the total volume  $\Lambda_V$  equals the growth rate of the population, where both of them have been measured from the statistics of the final population at a fixed time. Importantly, such a determination of the population growth rate also agrees (within errors bars) with the one based on Eq. (6) using lineage trajectories. Therefore, this shows that Eq. (6) could be used as a numerical method to determine a population growth rate based on lineage statistics.

Another striking feature of Fig. 4 is that regardless of the determination of  $\Lambda_p$ , all the points are below the dashed line. The interpretation is that in a snapshot at time  $t$ , it is less likely to see cells with a short generation time (corresponding to large single-cell growth rates), and therefore the distribution is biased towards small single-cell growth rate [19]. Since the population growth rate generally increases with respect to the single-cell growth rate  $\nu_m$ , this bias leads to a decrease of the population growth rate with respect to the case of no variability in the single-cell growth rate.

As mentioned in Sec. I, the fluctuation relation of Eq. (4) includes such a statistical bias: when uniformly choosing one individual in a population, an individual belonging to a lineage with prolific ancestors is more likely to be chosen, and as a result, the jump rate on a lineage must be multiplied by the mean number of offsprings. Although variability in the single-cell growth rate also introduces a form of statistical bias as explained above, the bias is not exactly the same one as that contained in the fluctuation relation. We would like to point out a comprehensive theoretical study on the effect of variability on the population growth rate, namely, [24]. This study confirms that in the case of size models with independent and identically distributed single-cell growth rates, variability indeed lowers the Malthusian growth rate as observed in Fig. 4. This work also discusses age models, with and without correlations in single-cell growth rates, and concludes that in general, variability may lead to either a positive or negative trend on the population growth rate.

**D. Consequences for the distribution of generation times**

An important quantity in population dynamics is the distribution of generation times  $f(\tau)$ . This quantity can be evaluated from the observable [25]

$$A_K = \frac{1}{K} \sum_{k=1}^K \delta(\tau - \tau_k), \tag{7}$$

where the index  $k$  runs over all the  $K$  cell cycles which have appeared in the trajectory that starts from  $t = 0$  to final time  $t$ . This observable can be evaluated either on a lineage or on a tree. By reporting  $A_K$  as the observable  $A$  in Eq. (4), one deduces the relation

$$f_{\text{tree},B}(\tau) = \left\langle \frac{1}{K} \sum_{k=1}^K \delta(\tau - \tau_k) e^{W_i - t\Lambda_i} \right\rangle_{\text{lin},2B}, \tag{8}$$

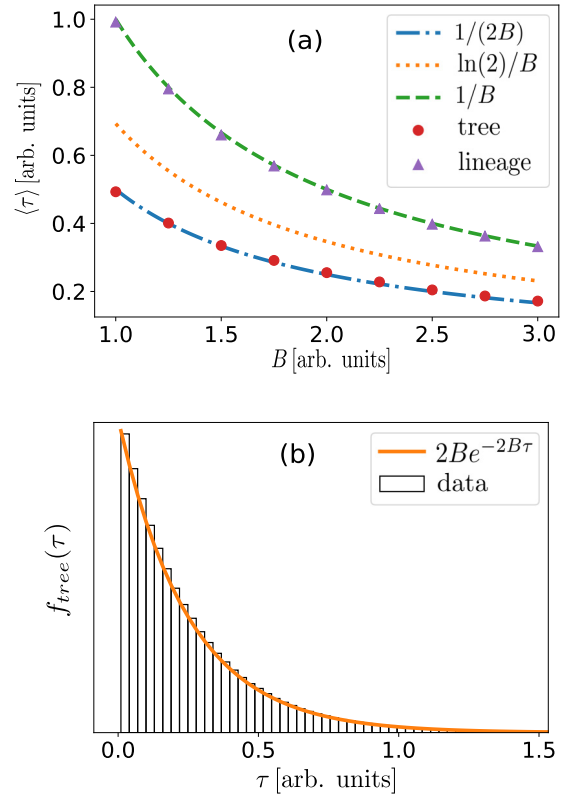


FIG. 5. (a) Mean generation times evaluated in a tree (red circles) and in lineage (violet triangles) against the division rate  $B$ . Theoretical predictions are shown as dashed lines and the doubling time  $T_d = \ln(2)/B$  is shown as a dotted line. (b) Distribution of generation times in the tree  $f_{\text{tree}}(\tau)$ . In these figures, the division rate  $B$  and the single-cell growth rate  $\nu$  are constant and equal to each other.

where a summation over the random variable  $K$  and a dependence on the final time  $t$  are implicit. In the particular case where the division rate  $B$  is constant,  $W_i = t\Lambda_i$  and, therefore,  $f_{\text{tree},B}(\tau) = f_{\text{lin},2B}(\tau)$ . In this case, the generation-time distribution in a lineage is the simple exponential  $f_{\text{lin},B}(\tau) = B \exp(B\tau)$  with mean  $1/B$ . It follows that  $f_{\text{tree},B}(\tau) = 2B \exp(2B\tau)$  with mean  $1/(2B)$ . Figure 5 confirms that the distribution of generation times has the expected properties.

**IV. A SECOND FLUCTUATION THEOREM TO RELATE LINEAGE AND TREE STATISTICS**

When the division rate  $B$  is not constant, the distribution of generation times will no longer be exponential, but we may still wonder how mean generation times observed at the lineage and tree levels compare to each other. In order to address this issue, we derive a different fluctuation theorem that connects this time the lineage and tree statistics with the same division rate  $B$ . More precisely, it follows from a direct comparison of (A10) and (A9) taking again  $P_0 = p_0$ . Since the division rate is the same in both probability distributions, we stick to the notations introduced above, except that now the index  $B$  will be omitted.

This allows one to write

$$\mathcal{P}^{\text{tree}}[\{x_k, v_k, t_k\}] = \mathcal{P}^{\text{lin}}[\{x_k, v_k, t_k\}] \exp[K \ln m - t \Lambda_t]. \quad (9)$$

Now, by multiplying the above relation by an arbitrary trajectory observable  $A$  and taking  $m = 2$ , we obtain

$$\langle A(\{\mathbf{y}\}) \rangle_{\text{tree}} = \langle A(\{\mathbf{y}\}) e^{K \ln 2 - t \Lambda_t} \rangle_{\text{lin}}, \quad (10)$$

where  $K = K(\{\mathbf{y}\})$  counts as in Eq. (7) the number of divisions.

In the particular case where  $A(\{\mathbf{y}\}) = \delta(\mathbf{y} - \mathbf{y}(t)) \delta_{K, K(t)}$ , Eq. (10) leads, upon averaging, to a relation between the joint probability distributions of size, growth rate, and number of divisions at the lineage and tree levels [18],

$$P^{\text{tree}}(x, v, K) = 2^K e^{-\Lambda_p t} P^{\text{lin}}(x, v, K), \quad (11)$$

which we call a *local* fluctuation relation. Averages over lineages within a population can be carried out with respect to either a chronological or a retrospective distribution [12,13,25], which correspond, respectively, to our lineage and tree probability distributions. Let us briefly comment on a connection to a discussion presented in Ref. [18]. Elimination of  $K$  in Eq. (11) leads to a fluctuation theorem only involving phenotypic traits  $x$  and  $v$ :

$$\begin{aligned} P^{\text{tree}}(x, v) &= \sum_K P^{\text{tree}}(x, v, K) \\ &= e^{-\Lambda_p t} \sum_K 2^K P^{\text{lin}}(x, v, K) \\ &= e^{-\Lambda_p t} P^{\text{lin}}(x, v) \sum_K 2^K R^{\text{lin}}(K|x, v) \\ &\equiv e^{[h(x, v) - \Lambda_p]t} P^{\text{lin}}(x, v), \end{aligned} \quad (12)$$

where we have introduced the probability of the number of division events conditioned on size and growth rate at the lineage level,  $R^{\text{lin}}(K|x, v)$ , and the equivalent of the ‘‘fitness landscape’’ of Ref. [18] reads

$$h(x, v) = \frac{1}{t} \ln \langle 2^K |x, v \rangle = \frac{1}{t} \ln \left[ \sum_K 2^K R^{\text{lin}}(K|x, v) \right]. \quad (13)$$

By summing over  $K$  in Eq. (11), one obtains

$$P^{\text{tree}}(x, v) = e^{[h(x, v) - \Lambda_p]t} P^{\text{lin}}(x, v), \quad (14)$$

in terms of a function  $h(x, v)$  called fitness landscape in Ref. [18]. Equations (11)–(14) show that the knowledge of the two phenotypic probability distributions  $P^{\text{tree}}$  and  $P^{\text{lin}}$  can be used to infer a fitness function for size and growth rate.

### A. Inequalities for mean generation times

Let us also introduce the Kullback-Leibler divergence between two probabilities  $p$  and  $q$ :

$$D(p|q) = \int dx p(x) \ln \frac{p(x)}{q(x)} \geq 0. \quad (15)$$

Using the fluctuation relation of Eq. (9), we obtain

$$D(\mathcal{P}^{\text{lin}}|\mathcal{P}^{\text{tree}}) = -\langle K \rangle_{\text{lin}} \ln 2 + t \Lambda_t. \quad (16)$$

On large times  $t$ , we can use the relation  $\langle \tau \rangle_{\text{lin}} = t / \langle K \rangle_{\text{lin}}$ , which, together with the definition of the population doubling

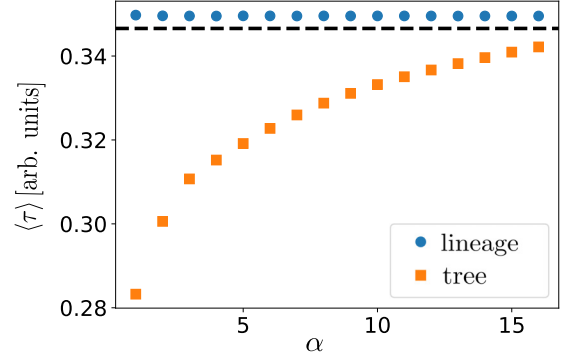


FIG. 6. Mean generation times measured in a lineage or in a tree vs the exponent  $\alpha$  entering in the division rate  $B(x, v) = vx^\alpha$ . The dashed line represents the doubling time  $\ln 2 / \Lambda$ , the single-cell growth rate is  $v = 2$ , and values  $\alpha \in [1, 16]$  are shown.

time  $T_d = \ln 2 / \Lambda_t$ , leads to the right inequality in

$$\langle \tau \rangle_{\text{tree}} \leq T_d \leq \langle \tau \rangle_{\text{lin}}, \quad (17)$$

while the left inequality follows very similarly using  $D(\mathcal{P}^{\text{tree}}|\mathcal{P}^{\text{lin}})$ .

In the case that  $B$  is constant, as shown in Fig. 5(a), Eq. (17) is trivially satisfied. For  $B$  nonconstant of the form  $vx^\alpha$ , the inequalities are verified numerically in Fig. 6. This figure shows that the mean generation time for lineage (tree) approaches the doubling time in the limit of large  $\alpha$  because in this limit the distribution of generation times becomes peaked at  $T_d$ .

### B. Illustration of the inequalities based on experimental data

In this section, we present an illustration of the above inequalities, namely, Eq. (17), using the experimental data of Hashimoto *et al.* [10]. In this experiment, the single-cell growth dynamics of a population of *E. coli* placed in a constant environment has been tracked in a flow cytometer. From an analysis of single-cell lineages, this experiment yields measurements of the population doubling time, together with the two mean generation times discussed above. The terminology used in this paper is different from the one we have introduced here, but one can show that the distributions  $g$  and  $g^*$  introduced in that work correspond to what we call the lineage and tree distributions, respectively.

In Fig. 3(b) of the main text of Ref. [10], the mean generation time along a lineage is shown as a function of the population doubling time  $T_d$  for various bacteria strains, which illustrates the right inequality of Eq. (17). Fortunately, in the supplemental material of that paper, the data needed to plot the tree average are also given. For this reason, we show in Fig. 7 the combined data, which illustrates both inequalities of Eq. (17).

These data have been interpreted in the framework of an age-controlled model, assuming negligible mother-daughter correlations, which the authors have checked with their data [10]. They have also shown theoretically, as we also find in the next section devoted to age models, that Eq. (17) hold for the age-controlled model assuming no mother-daughter correlations. The important point we would like to make

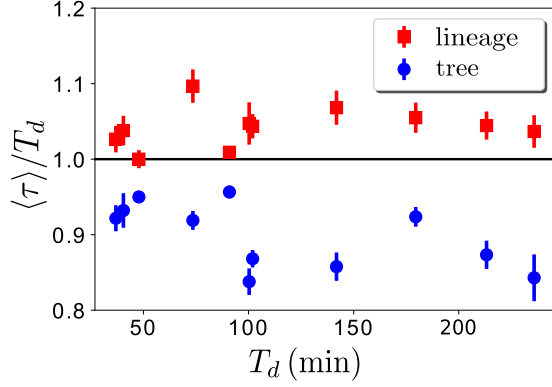


FIG. 7. Mean generation time evaluated on a tree (blue filled circles) and on a lineage (red filled squares) normalized by the population doubling time  $T_d$  as a function of the population doubling time  $T_d$ . These data have been extracted from [10].

here is that this experimental data shown in Fig. 7 are also fully compatible with our predictions for size-control models according to our Eq. (17). The strength of our derivation lies precisely in the fact that this result holds for a broad class of size-controlled models, without having to prescribe a precise form of the division rate or of the kernel  $\Sigma$ .

## V. RESULTS FOR AGE-CONTROLLED MODELS

### A. Definition of age-controlled models

When the division rate depends on the age of the cells instead of their size, the structure of the model is rather different from that of the previous section. Let us now introduce a further distinction between two types of age models. In the first type, the interdivision times of mother and daughter cells are uncorrelated, and the division rate is determined by the age of the cells only. Such a model is usually termed an independent generation times (IGT) model or Bellmann-Harris process [9]. In the second type of models, the division rate may depend on other variables besides the age and, as a result, mother-daughter correlations will be present. Although many results for IGT models have already appeared in the literature, it is necessary to go through them in order to understand what changes when correlations are present.

In the case of the IGT type of models, the density of cells having age  $a$  in the population at time  $t$ ,  $n(a, t)$ , satisfies the evolution equation

$$(\partial_t + \partial_a)n(a, t) = -B(a)n(a, t), \quad (18)$$

with the boundary condition

$$n(0, t) = 2 \int_0^\infty B(a)n(a, t)da. \quad (19)$$

As before,  $B(a)$  denotes the age-dependent division rate. The physical interpretation of the boundary condition (19) is clear: Each dividing cell gives rise to two newborn cells (i.e., two cells with age  $a = 0$ ). The total number of cells in the population at time  $t$  follows by integration of the density,  $N(t) = \int n(a, t)da$ .

As in the case of size control, lineage dynamics can be directly encoded in the evolution of the age distribution. Such

dynamics reads

$$(\partial_t + \partial_a)p(a, t) = -B(a)p(a, t), \quad (20)$$

which is complemented by the boundary condition,

$$p(0, t) = \int_0^\infty B(a)p(a, t)da, \quad (21)$$

so that probability is conserved and  $p(a, t)$  is normalized.

In the second type of models, correlations in the interdivision times are accounted for by adding an extra dependence of the division rate on the growth rate,  $B(a, v)$ , while introducing at the same time correlations between the growth rate of mother and daughter cells. The model then reads

$$(\partial_t + \partial_a)n(a, v, t) = -B(a, v)n(a, v, t), \quad (22)$$

$$n(0, v, t) = 2 \int_0^\infty da \int_0^\infty dv' \Sigma(v|v')B(a, v')n(a, v', t), \quad (23)$$

at the population level, and

$$(\partial_t + \partial_a)p(a, v, t) = -B(a, v)p(a, v, t), \quad (24)$$

$$p(0, v, t) = \int_0^\infty da \int_0^\infty dv' \Sigma(v|v')B(a, v')p(a, v', t), \quad (25)$$

at the lineage level.

### B. Generation-time distribution

Beyond cell size-control models, one can also consider age models, which may or may not have mother-daughter correlations. Let us first consider the case where correlations are absent, the so-called IGT model, and let us focus on the distribution of generation times either in a lineage or in a population.

As in the case of size control, the lineage dynamics of age-structured models can be directly encoded in the evolution of the age distribution, as prescribed by Eqs. (20) and (21). Let us consider steady-state conditions,

$$\partial_a p(a) = -B(a)p(a), \quad (26)$$

$$p(0) = \int_0^\infty B(a)p(a)da. \quad (27)$$

A nice feature of age models is that the generation-time distribution can be accessed directly. This is so because generation-time distribution is the age distribution of the dividing cells. We proceed to compute this distribution for individual lineages in age-structured IGT models. First, note that from (26) immediately follows that

$$p(a) = p(0) \exp \left[ - \int_0^a B(a')da' \right]. \quad (28)$$

Relying on the relation between generation-time distribution and age distribution of *dividing* cells, we can write

$$f_{\text{lin}}(\tau) = \frac{B(\tau)p(\tau)}{\int_0^\infty B(a)p(a)da} \equiv B(\tau) \exp \left[ - \int_0^\tau B(a)da \right], \quad (29)$$

where we have used (27) and (28).

Now in order to obtain the distribution of generation times at the population level, we start from Eqs. (18) and (19). Again, we focus on stationary conditions for which the total number of cells in the population grows exponentially, as  $N(t) = e^{\Lambda_p t}$ . In that case, the density can be written in terms of the stationary probability density of cells with a given age as  $n(a, t) = e^{\Lambda_p t} P(a)$ , where  $P(a)$  is the stationary age distribution of the population. We have

$$\partial_a P(a) = -[\Lambda_p + B(a)]P(a), \quad (30)$$

with the boundary condition

$$P(0) = 2 \int_0^\infty B(a)P(a)da. \quad (31)$$

It is worth noting that normalization of  $P(a)$  in (30) leads, using (31), to the following identity:

$$\Lambda_p = \int_0^\infty B(a)P(a)da \equiv \frac{1}{2}P(0). \quad (32)$$

We can now proceed to compute the generation-time distribution by computing the age distribution of dividing cells. We have, first, for the stationary distribution from (30),

$$\begin{aligned} P(a) &= P(0) \exp \left[ -\Lambda_p a - \int_0^a B(a')da' \right] \\ &\equiv 2\Lambda_p \exp \left[ -\Lambda_p a - \int_0^a B(a')da' \right], \end{aligned} \quad (33)$$

where we have also used (32). Let us highlight an important relation for IGT models obtained from the normalization of  $P(a)$  in Eq. (33):

$$\int_0^\infty \exp \left[ -\Lambda_p a - \int_0^a B(a')da' \right] da = \frac{1}{2\Lambda_p}. \quad (34)$$

We can now calculate the generation-time distribution, which reads

$$\begin{aligned} f_{\text{tree}}(\tau) &= \frac{B(\tau)P(\tau)}{\int_0^\infty B(a)P(a)da} \\ &= 2B(\tau) \exp \left[ -\Lambda_p \tau - \int_0^\tau B(a)da \right]. \end{aligned} \quad (35)$$

Reading now from the result for the lineage, given by Eq. (29), we obtain

$$f_{\text{tree}}(\tau) = 2f_{\text{lin}}(\tau)e^{-\Lambda_p \tau}, \quad (36)$$

which corresponds to the result derived in Ref. [10] with the identification of their generation-time distribution  $g(g^*)$  with our distributions  $f_{\text{lin}}(f_{\text{tree}})$ .

Using Eq. (36), we have, for instance,

$$\begin{aligned} D(f_{\text{tree}}||f_{\text{lin}}) &= \int_0^\infty f_{\text{tree}}(\tau) \ln \frac{f_{\text{tree}}(\tau)}{f_{\text{lin}}(\tau)} d\tau \\ &= \ln 2 \left[ 1 - \frac{\langle \tau \rangle_{\text{tree}}}{T_d} \right] \geq 0 \\ &\Rightarrow \langle \tau \rangle_{\text{tree}} \leq T_d, \end{aligned} \quad (37)$$

where as usual the population doubling time reads  $T_d = \ln 2/\Lambda_p$ . It is straightforward to prove the second inequality

using the same technique. We then conclude that for IGT models, one has the same result as obtained for size-structured populations in Eq. (17), i.e.,

$$\langle \tau \rangle_{\text{tree}} \leq T_d \leq \langle \tau \rangle_{\text{lin}}. \quad (38)$$

### C. Beyond uncorrelated age models

In view of the results of the previous section, it is natural to ask what happens in the more complex case in which mother-daughter correlations are present. In Appendix B, we derived a generalization of Eq. (36) for that case, namely,

$$f_{\text{tree}}(\tau, \nu) = 2 \frac{\rho_b^{\text{tree}}(\nu)}{\rho_b^{\text{lin}}(\nu)} f_{\text{lin}}(\tau, \nu) e^{-\Lambda_p \tau}, \quad (39)$$

where  $\rho_b^{\text{lin}}(\nu)$  [ $\rho_b^{\text{tree}}(\nu)$ ] represent the growth-rate distributions of newborn cells at the lineage [tree] level. The presence of these two probability distributions is entirely due to mother-daughter correlations. As a result, the inequalities (17) [identical to (38)] do not necessarily hold for age models with correlations. An example where they are indeed violated can be found in the model with correlated generation times studied in Ref. [26] in some range of parameters.

## VI. CONCLUSION

In conclusion, we have established several fluctuation relations which relate observables measured at the lineage and tree levels. We have deduced from the second fluctuation relation that mean generation time in a lineage is larger than the population doubling time, while mean generation time in a tree is smaller than the population doubling time. We have found that the experimental data of Hashimoto *et al.* fully confirm this observation [10]. We conclude from this that these data are compatible either with the uncorrelated age models used by these authors to analyze their data or with the class of cell size-control mechanisms considered in this paper.

Our approach being general, it could be extended to cover more complex cases such as asymmetric divisions relevant for yeast cells and nonexponential regimes of growth, relevant for eukaryotes and other mechanisms of cell aging [27]. While we have mainly focused on the control of the size variable, extension of this formalism to other variables not directly linked to cell size is possible, with one choice being, for instance, the protein copy numbers [20,21].

We also find that the variability of single-cell growth has a negative impact on the population growth rate in the absence of mother-daughter growth-rate correlations when the division rate is  $B(x, \nu) = \nu x$ . A positive impact due to correlations in the interdivision times has been reported in another study [26], while more generally a positive or negative impact should be expected depending on the form of the division rate [24]. All of these recent results suggest that generation times are under a strong evolutionary pressure in which single-cell variability and correlations over generations [28] play an important role.

In the future, we would like to study systems where the division rate is controlled simultaneously by the size and the age of the cell, which represents a situation of major biological

relevance [29]. Finally, while this work was under review, two new studies of cell growth dynamics have appeared, which relate either to our pathwise formulation [30] or to our analysis of generation-time distributions [31].

### ACKNOWLEDGMENTS

R.G.G. was supported by the Agence Nationale de la Recherche (Grant No. ANR-16-CE11-0026-03) and by Labex CelTisPhysBio (Grant No. ANR-10-LBX-0038). We would like to thank E. Braun, L. Robert, A. Olivier, T. J. Kobayashi, and Y. Wakamoto for stimulating discussions.

## APPENDIX A: PATH INTEGRAL REPRESENTATION OF THE DYNAMICS FOR SIZE-CONTROLLED MODELS

### 1. Population level

Let us start by building a path integral representation associated to the evolution of the number density of cells in the population case, given by Eq. (1). Here, we will allow for an arbitrary number of offsprings  $m$  for generality, although only  $m = 2$  was considered above. We emphasize that  $m$  should be independent of the state of the system. Let us treat the following term:

$$f(\mathbf{y}, t) = m \int d\mathbf{y}' \Sigma(\mathbf{y}|\mathbf{y}') B(\mathbf{y}') n(\mathbf{y}', t), \quad (\text{A1})$$

in Eq. (1), as a perturbation. The *growth propagator*  $G_B$  of the unperturbed dynamics is such that

$$\partial_t G_B(x, \nu, t|x', t') = -\nu \partial_x [x G_B(x, \nu, t|x', t')] - B(x, \nu) G_B(x, \nu, t|x', t'), \quad (\text{A2})$$

with initial condition  $G_B(x, \nu, t'|x', t') = \delta(x - x')$ . Then, using these equations, one can check that

$$n(x, \nu, t) = \int_0^\infty dx_0 G_B(x, \nu, t|x_0, 0) n_0(x_0, \nu) + \int_0^t dt' \int_0^\infty dx' G_B(x, \nu, t|x', t') f(x', \nu, t') \quad (\text{A3})$$

is equivalent to the initial problem given in Eq. (1). By explicitly using the definition of  $f$  from Eq. (A1), one obtains

$$\begin{aligned} n(x, \nu, t) &= \int_0^\infty dx_0 G_B(x, \nu, t|x_0, 0) n_0(x_0, \nu) + m \int_0^t dt_1 \int_0^\infty dx_1 G_B(x, \nu, t|x_1, t_1) \\ &\quad \times \int_0^\infty d\nu_0 \int_0^\infty dz \Sigma(x_1, \nu, |z, \nu_0) B(z, \nu_0) n(z, \nu_0, t_1), \end{aligned} \quad (\text{A4})$$

which allows one to find an explicit solution for  $n(x, \nu, t)$  iteratively.

The explicit solution of Eq. (A2) is

$$G_B(x, \nu, t|x', t') = \delta(x - x' e^{\nu(t-t')}) \exp \left[ - \int_{t'}^t d\tau B(x' e^{\nu(\tau-t')}, \nu) \right], \quad (\text{A5})$$

which allows us to write

$$\begin{aligned} n(x, \nu, t) &= \int_0^\infty dx_0 \delta(x - x_0 e^{\nu t}) \exp \left[ - \int_0^t d\tau B(x_0 e^{\nu \tau}, \nu) \right] n_0(x_0, \nu) \\ &\quad + m \int_0^t dt_1 \int_0^\infty d\nu_0 \int_0^\infty dx_1 \int_0^\infty dx_0 \delta(x - x_1 e^{\nu(t-t_1)}) \exp \left[ - \int_{t_1}^t d\tau B(x_1 e^{\nu(\tau-t_1)}, \nu) \right] \\ &\quad \times \Sigma(x_1, \nu, |x_0 e^{\nu_0 t_1}, \nu_0) B(x_0 e^{\nu_0 t_1}, \nu_0) \exp \left[ - \int_0^{t_1} d\tau B(x_0 e^{\nu_0 \tau}, \nu_0) \right] n_0(x_0, \nu_0) + \dots, \end{aligned} \quad (\text{A6})$$

or, more compactly,

$$\begin{aligned} n(x, \nu, t) &= \sum_{K=0}^\infty m^K \int_0^t dt_K \dots \int_0^{t_2} dt_1 \int_0^\infty \prod_{k=0}^K dx_k d\nu_k \delta(\nu - \nu_K) \delta(x - x_K e^{\nu_K(t-t_K)}) n_0(x_0, \nu_0) \\ &\quad \times \exp \left[ - \int_0^t d\tau B(x(\tau), \nu(\tau)) \right] \prod_{k=1}^K \mathbb{T}(x_k, \nu_k, |x_{k-1} e^{\nu_{k-1}(t_k-t_{k-1})}, \nu_{k-1}), \end{aligned} \quad (\text{A7})$$

where trajectories explicitly appearing in the exponential in the right-hand side of (A7) are given as  $\nu(\tau) = \nu_k$ , and  $x(\tau) = x_k \exp[\nu_k(\tau - t_k)]$ , for  $\tau \in (t_k, t_{k+1}]$ , while  $k = 0, 1, \dots, K$ . In our notations,  $t_0 = 0$  and  $t_{K+1} = t$ . In addition, the transition matrix is given as  $\mathbb{T}(x, \nu|x', \nu') = \Sigma(x, \nu|x', \nu') B(x', \nu')$ .

The last step now consists in noticing that the object propagating trajectories from  $t_0 = 0$  up to time  $t$  in (A7) is not yet a path probability because it is not properly normalized. To deal with this issue, it is good to pass from number densities to population-level probability densities,  $P(x, \nu, t) = N(t)^{-1} n(x, \nu, t)$  and  $P_0(x, \nu) = N(0)^{-1} n_0(x, \nu)$ . We can now write in terms



of these quantities,

$$P(x, v, t) = \sum_{K=0}^{\infty} \int_0^t dt_K \dots \int_0^{t_2} dt_1 \int_0^{\infty} \prod_{k=0}^K dv_k \int_0^{\infty} \prod_{k=0}^{K+1} dx_k \delta(v - v_K) \delta(x - x_{K+1}) \mathcal{P}_B^{\text{tree}}[\{x_k, v_k, t_k\}], \quad (\text{A8})$$

where the object

$$\begin{aligned} \mathcal{P}_B^{\text{tree}}[\{x_k, v_k, t_k\}] &= m^K \delta(x_{K+1} - x_K e^{v_K(t-t_K)}) \exp \left[ -t \Lambda_t - \int_0^t d\tau B(x(\tau), v(\tau)) \right] \\ &\times \prod_{k=1}^K \mathbb{T}(x_k, v_k, |x_{k-1} e^{v_{k-1}(t_k-t_{k-1})}, v_{k-1}) P_0(x_0, v_0) \end{aligned} \quad (\text{A9})$$

is now properly normalized and can be identified with the correct path probability generating averages of all observables related to the number density at the population level. We have added a subscript  $B$  to indicate that the division rate is given by  $B(x, v)$ . This will be important later in the derivation of fluctuation theorems. Note that when passing from densities to probability densities, a new term has appeared in the argument of the exponential, namely,  $\Lambda_t$ , which is connected to the population growth rate,  $\Lambda_p$ , by Eq. (3).

## 2. Lineage level

The starting point to derive the path probability for lineage observables is the evolution equation for the probability density of size and growth rate, given by Eq. (2). Except for the absence of the factor two in front of the integral, the structure of the equations is the same and the derivation follows along exactly as in the population case. We provide the final result:

$$\begin{aligned} \mathcal{P}_B^{\text{lin}}[\{x_k, v_k, t_k\}] &= \delta(x_{K+1} - x_K e^{v_K(t-t_K)}) \exp \left[ - \int_0^t d\tau B(x(\tau), v(\tau)) \right] \\ &\times \prod_{k=1}^K \mathbb{T}(x_k, v_k, |x_{k-1} e^{v_{k-1}(t_k-t_{k-1})}, v_{k-1}) p_0(x_0, v_0), \end{aligned} \quad (\text{A10})$$

which can be readily shown to be properly normalized. Here,  $p_0$  is the distribution of initial conditions for the lineage. Note that we have introduced  $p_0$ , which could be different from the  $P_0$  introduced earlier as the initial condition of the population.

## 3. Derivation of fluctuation relations

We can now compare path probability representations at the population and lineage levels given by (A10) and (A9) with each other. We see that a possible way to bring both distributions “closer” together is to multiply the division rate at the lineage level by the factor  $m$ , and to consider a lineage starting from the same initial condition as that of the population. A possible choice of this initial condition consists, for instance, in considering a population dynamics starting from a single cell.

In that case, we have

$$\begin{aligned} \mathcal{P}_{mB}^{\text{lin}}[\{x_k, v_k, t_k\}] &= m^K \delta(x_{K+1} - x_K e^{v_K(t-t_K)}) \exp \left[ -m \int_0^t d\tau B(x(\tau), v(\tau)) \right] \\ &\times \prod_{k=1}^K \mathbb{T}(x_k, v_k, |x_{k-1} e^{v_{k-1}(t_k-t_{k-1})}, v_{k-1}) P_0(x_0, v_0). \end{aligned} \quad (\text{A11})$$

Then, the following relation holds from direct comparison of (A11) and (A9):

$$\mathcal{P}_B^{\text{tree}}[\{x_k, v_k, t_k\}] = \mathcal{P}_{mB}^{\text{lin}}[\{x_k, v_k, t_k\}] \exp \left[ (m-1) \int_0^t d\tau B(x(\tau), v(\tau)) - t \Lambda_t \right]. \quad (\text{A12})$$

## APPENDIX B: FLUCTUATION THEOREM FOR CORRELATED AGE MODELS

### 1. Lineage dynamics

We now consider models in which interdivision times are correlated. The natural way in which these correlations arise is by inter-cell-cycle growth-rate fluctuations, as given by Eqs. (24) and (25). Growth-rate correlations are encoded in  $\Sigma$ , which is a properly normalized conditional probability. Again, we will focus on stationary conditions. It is simple to see from (24) that one can formally write the stationary distribution as

$$p(a, v) = p(0, v) \exp \left[ - \int_0^a B(a', v) da' \right]. \quad (\text{B1})$$

To determine  $p(0, v)$ , we use (25) and (B1),

$$\begin{aligned} p(0, v) &= \int_0^\infty da \int_0^\infty dv' \Sigma(v|v') B(a, v') p(0, v') \exp \left[ - \int_0^a B(a', v') da' \right] \\ &= - \int_0^\infty dv' \Sigma(v|v') p(0, v') \int_0^\infty da \frac{d}{da} \exp \left[ - \int_0^a B(a', v') da' \right], \end{aligned} \quad (\text{B2})$$

from where we get the following integral equation:

$$p(0, v) = \int_0^\infty \Sigma(v|v') p(0, v') dv'. \quad (\text{B3})$$

The generation-time distribution can now be determined, again, as the age distribution of dividing cells. It is worth considering a slightly more general object, i.e., the *joint* probability distribution of interdivision time and growth rate,

$$f_{\text{in}}(\tau, v) = \frac{B(\tau, v) p(\tau, v)}{\int_0^\infty da \int_0^\infty dv B(a, v) p(a, v)} = \frac{B(\tau, v) p(0, v) \exp \left[ - \int_0^\tau B(a, v) da \right]}{\int_0^\infty p(0, v') dv'}. \quad (\text{B4})$$

This result can be written in a more illuminating way by noticing that the growth-rate distribution of newborn cells can be identified as

$$\rho_b^{\text{lin}}(v) = \frac{p(0, v)}{\int_0^\infty p(0, v') dv'}. \quad (\text{B5})$$

Furthermore, due to the linearity of Eq. (B3) and the fact that  $\rho_b^{\text{lin}}(v)$  differs from  $p(0, v)$  only in a multiplicative constant, we have that  $\rho_b^{\text{lin}}(v)$  satisfies

$$\rho_b^{\text{lin}}(v) = \int_0^\infty \Sigma(v|v') \rho_b^{\text{lin}}(v') dv'. \quad (\text{B6})$$

These observations then lead to the final result,

$$f_{\text{in}}(\tau, v) = \rho_b^{\text{lin}}(v) B(\tau, v) \exp \left[ - \int_0^\tau B(a, v) da \right]. \quad (\text{B7})$$

## 2. Population dynamics

Let us now consider the population level. The stationary equation for the population age distribution reads

$$\partial_a P(a, v) = -[\Lambda_p + B(a, v)] P(a, v), \quad (\text{B8})$$

with boundary condition

$$P(0, v) = 2 \int_0^\infty da \int_0^\infty dv' \Sigma(v|v') B(a, v') P(a, v'). \quad (\text{B9})$$

We then have

$$P(a, v) = P(0, v) \exp \left[ -\Lambda_p a - \int_0^a B(a', v) da' \right]. \quad (\text{B10})$$

Note that the normalization of  $P$  gives the following condition:

$$\begin{aligned} \Lambda_p &= \int_0^\infty da \int_0^\infty dv B(a, v) P(a, v) = \int_0^\infty dv P(0, v) \int_0^\infty da B(a, v) \exp \left[ -\Lambda_p a - \int_0^a B(a', v) da' \right] \\ &= - \int_0^\infty dv P(0, v) \int_0^\infty da \left( \frac{d}{da} + \Lambda_p \right) \exp \left[ -\Lambda_p a - \int_0^a B(a', v) da' \right] \\ &= \int_0^\infty dv P(0, v) - \Lambda_p \int_0^\infty dv P(0, v) \Gamma(v), \end{aligned} \quad (\text{B11})$$

where we have used (B10) and introduced the function

$$\Gamma(v) = \int_0^\infty da \exp \left[ -\Lambda_p a - \int_0^a B(a', v) da' \right]. \quad (\text{B12})$$

We can thus write, for the growth rate of the population,

$$\Lambda_p = \frac{\int_0^\infty P(0, v) dv}{1 + \int_0^\infty P(0, v) \Gamma(v) dv}. \quad (\text{B13})$$

On the other hand, integrating directly in (B10), we get

$$1 = \int_0^\infty da \int_0^\infty dv P(0, v) \exp \left[ -\Lambda_p a - \int_0^a B(a', v) da' \right] = \int_0^\infty P(0, v) \Gamma(v) dv, \quad (\text{B14})$$

so we have

$$\Lambda_p = \frac{1}{2} \int_0^\infty P(0, v) dv. \quad (\text{B15})$$

As before, we can find an equation for  $P(0, v)$  using (B9) and the solution for  $P(a, v)$ , Eq. (B10):

$$\begin{aligned} P(0, v) &= 2 \int_0^\infty da \int_0^\infty dv' \Sigma(v|v') P(0, v') B(a, v') \exp \left[ -\Lambda_p a - \int_0^a B(a', v') da' \right] \\ &= -2 \int_0^\infty dv' \Sigma(v|v') P(0, v') \int_0^\infty da \left( \frac{d}{da} + \Lambda_p \right) \exp \left[ -\Lambda_p a - \int_0^a B(a', v') da' \right] \\ &= 2 \int_0^\infty dv' \Sigma(v|v') P(0, v') - 2\Lambda_p \int_0^\infty dv' \Sigma(v|v') P(0, v') \int_0^\infty da \exp \left[ -\Lambda_p a - \int_0^a B(a', v') da' \right], \end{aligned} \quad (\text{B16})$$

so we then have

$$P(0, v) = 2 \int_0^\infty dv' \Sigma(v|v') [1 - \Lambda_p \Gamma(v')] P(0, v'). \quad (\text{B17})$$

Let us now write the joint probability distribution of interdivision times and single-cell growth rate:

$$f_{\text{tree}}(\tau, v) = \frac{B(\tau, v) P(\tau, v)}{\int_0^\infty da \int_0^\infty dv B(a, v) P(a, v)} = \frac{P(0, v)}{\Lambda_p} B(\tau, v) \exp \left[ -\Lambda_p \tau - \int_0^\tau B(a, v) da \right]. \quad (\text{B18})$$

The condition (B15) implies that  $P(0, v)/\Lambda_p = 2\rho_b^{\text{tree}}(v)$ , where

$$\rho_b^{\text{tree}}(v) = \frac{P(0, v)}{\int_0^\infty P(0, v) dv} \quad (\text{B19})$$

can be identified, as we did in the lineage case, with the growth-rate distribution of newborn cells, now at the tree level. We then have

$$f_{\text{tree}}(\tau, v) = 2\rho_b^{\text{tree}}(v) B(\tau, v) \exp \left[ -\Lambda_p \tau - \int_0^\tau B(a, v) da \right]. \quad (\text{B20})$$

Note once more that the linearity of Eq. (B17) and the fact that  $P(0, v)$  and  $\rho_b^{\text{tree}}(v)$  differ only on a multiplicative factor lead to the equation satisfied by  $\rho_b^{\text{tree}}$ ,

$$\rho_b^{\text{tree}}(v) = 2 \int_0^\infty dv' \Sigma(v|v') [1 - \Lambda_p \Gamma(v')] \rho_b^{\text{tree}}(v'). \quad (\text{B21})$$

If we now compare (B20) and (B7), we readily obtain Eq. (39). Before closing this paragraph, some comments are in order. First, note that as Eqs. (B6) and (B21) are clearly different, one has  $\rho_b^{\text{lin}}(v) \neq \rho_b^{\text{tree}}(v)$ . Nevertheless, in the absence of fluctuations, when  $\Sigma(v|v') = \delta(v - v')$ , we have  $\rho_b^{\text{lin}}(v) = \rho_b^{\text{tree}}(v)$ . To illustrate this, let us consider, for instance, a population starting from a single cell with growth rate  $v_0$ . As the growth rate remains the same in all cell cycles, we have  $\rho_b^{\text{lin}}(v) = \rho_b^{\text{tree}}(v) \equiv \delta(v - v_0)$  at all times. Then, Eq. (B6) becomes tautological, while Eq. (B21) leads to the identity

$$2[1 - \Lambda_p \Gamma(v_0)] = 1, \quad (\text{B22})$$

which is precisely the relation (34) found for IGT models [recall the definition of  $\Gamma$ ; see (B12)].

### 3. Inequalities in correlated age models

Let us now analyze the consequences of the generalized relation (39) for the inequalities. We have, for instance,

$$D(f_{\text{tree}}||f_{\text{lin}}) = \int f_{\text{tree}}(\tau, v) \ln \frac{f_{\text{tree}}(\tau, v)}{f_{\text{lin}}(\tau, v)} d\tau dv = \ln 2 \left[ 1 - \frac{\langle \tau \rangle_{\text{tree}}}{T_d} \right] + \int_0^\infty \tilde{f}_{\text{tree}}(v) \ln \frac{\rho_b^{\text{tree}}(v)}{\rho_b^{\text{lin}}(v)} dv \geq 0, \quad (\text{B23})$$

where  $\tilde{f}_{\text{tree}}(v) = \int d\tau f_{\text{tree}}(\tau, v)$  is the marginal distribution of the growth rate of the *dividing* cells. This result implies, in particular, that

$$T_d - \langle \tau \rangle_{\text{tree}} \geq -\frac{T_d}{\ln 2} \int_0^\infty \tilde{f}_{\text{tree}}(v) \ln \frac{\rho_b^{\text{tree}}(v)}{\rho_b^{\text{lin}}(v)} dv. \quad (\text{B24})$$

Given that the quantity in the right-hand side of (B24) does not have a definite sign (in particular, it is not necessarily positive), in this case the left inequality in (38) [and Eq. (17)] may be violated. Repeating a similar argument, one arrives at the same conclusion for the right inequality.

- 
- [1] A. Koch, *Bacterial Growth and Form* (Springer, New York, 2001).
- [2] L. Willis and K. Huang, *Nat. Rev. Microbiol.* **15**, 606 (2017).
- [3] A. Amir, *Phys. Rev. Lett.* **112**, 208102 (2014).
- [4] L. Robert, M. Hoffmann, N. Krell, S. Aymerich, J. Robert, and M. Doumic, *BMC Biol.* **12**, 17 (2014).
- [5] S. Taheri-Araghi, S. Bradde, J. T. Sauls, N. S. Hill, P. A. Levin, J. Paulsson, M. Vergassola, and S. Jun, *Curr. Biol.* **25**, 385 (2015).
- [6] J. Grilli, M. Osella, A. S. Kennard, and M. C. Lagomarsino, *Phys. Rev. E* **95**, 032411 (2017).
- [7] M. Campos, I. V. Surovtsev, S. Kato, A. Paintdakhi, B. Beltran, S. E. Ebmeier, and C. Jacobs-Wagner, *Cell* **159**, 1433 (2014).
- [8] E. O. Powell, *Microbiology* **15**, 492 (1956).
- [9] M. Kimmel and D. E. Axelrod, *Branching Processes in Biology* (Springer, New York, 2015).
- [10] M. Hashimoto, T. Nozoe, H. Nakaoka, R. Okura, S. Akiyoshi, K. Kaneko, E. Kussell, and Y. Wakamoto, *Proc. Natl. Acad. Sci.* **113**, 3251 (2016).
- [11] A. J. Hall, Ph.D. thesis, Massey University, 1991.
- [12] T. J. Kobayashi and Y. Sughiyama, *Phys. Rev. Lett.* **115**, 238102 (2015).
- [13] Y. Sughiyama, T. J. Kobayashi, K. Tsumura, and K. Aihara, *Phys. Rev. E* **91**, 032120 (2015).
- [14] G. E. Crooks, *Phys. Rev. E* **61**, 2361 (2000).
- [15] T. Nemoto, F. Bouchet, R. L. Jack, and V. Lecomte, *Phys. Rev. E* **93**, 062123 (2016).
- [16] C. Giardinà, J. Kurchan, and L. Peliti, *Phys. Rev. Lett.* **96**, 120603 (2006).
- [17] V. Bansaye, J.-F. Delmas, L. Marsalle, and V. C. Tran, *Ann. Appl. Probab.* **21**, 2263 (2011).
- [18] T. Nozoe, E. Kussell, and Y. Wakamoto, *PLoS Genet.* **13**, e1006653 (2017).
- [19] J. Lin and A. Amir, *Cell Systems* **5**, 358 (2017).
- [20] P. Thomas, *J. R. Soc. Interface* **14**, 20170467 (2017).
- [21] N. Brenner, E. Braun, A. Yoney, L. Susman, J. Rotella, and H. Salman, *Eur. Phys. J. E* **38**, 102 (2015).
- [22] M. R. Evans and S. N. Majumdar, *Phys. Rev. Lett.* **106**, 160601 (2011).
- [23] M. Doumic, B. Perthame, and J. P. Zubelli, *Inverse Probl.* **25**, 045008 (2009).
- [24] A. Olivier, *Kinet. Relat. Mod.* **10**, 481 (2017).
- [25] Y. Wakamoto, A. Y. Grosberg, and E. Kussell, *Evolution* **66**, 115 (2011).
- [26] A. Amir and J. Lin, [arXiv:1806.02818](https://arxiv.org/abs/1806.02818).
- [27] E. J. Stewart, R. Madden, G. Paul, and F. Taddei, *PLoS Biol.* **3**, e45 (2005).
- [28] O. Rivoire and S. Leibler, *Proc. Natl. Acad. Sci. USA* **111**, 1940 (2014).
- [29] M. Osella, E. Nugent, and M. Cosentino Lagomarsino, *Proc. Natl. Acad. Sci. USA* **111**, 3431 (2014).
- [30] Y. Sughiyama, S. Nakashima, and T. J. Kobayashi, *Phys. Rev. E* **99**, 012413 (2019).
- [31] F. Jafarpour, C. S. Wright, H. Gudjonson, J. Riebling, E. Dawson, K. Lo, A. Fiebig, S. Crosson, A. R. Dinner, and S. Iyer-Biswas, *Phys. Rev. X* **8**, 021007 (2018).